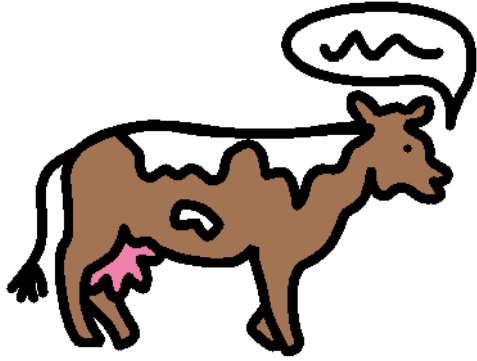


# Song Choice Cards

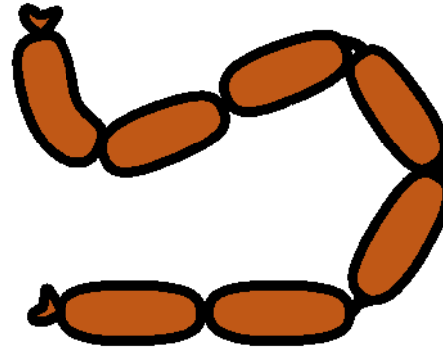
Moo Moo Jersey Cow



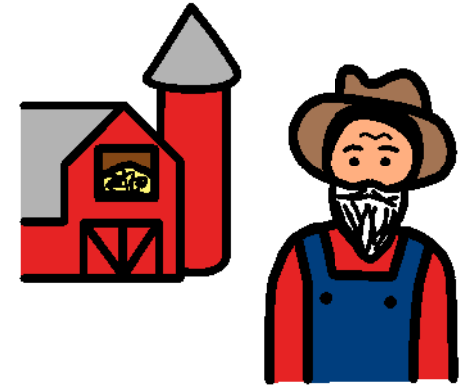
Wheels on the Bus



Ten Fat Sausages



Old MacDonald



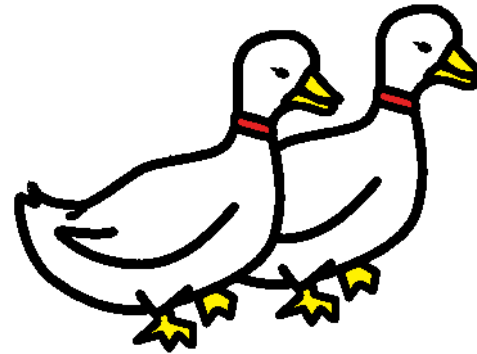
Miss Polly



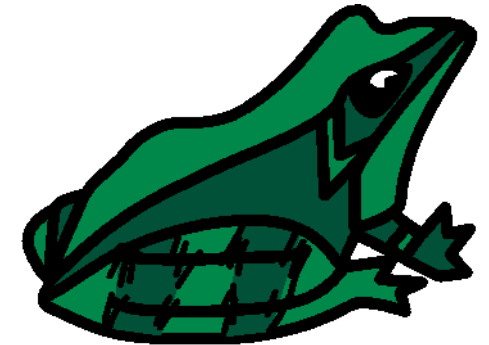
Hey Diddle Diddle



Five Little Ducks



Der Glumph



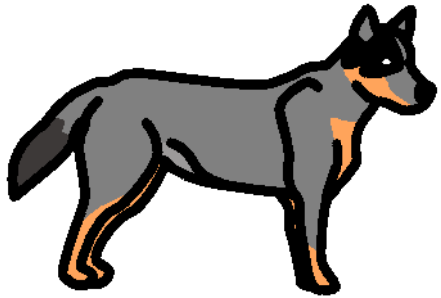
Instructions: These are song choice cards  
and are designed to be cut into individual cards.



© Scope (Vic) Ltd 2008. Nursery Rhymes to Sing, See and Sign.  
Developed by The Communication Resource Centre - A Service of Scope  
[www.scopevic.org.au](http://www.scopevic.org.au) - see disclaimer  
Supported by The Jack Brockhoff Foundation and hey dee ho music.  
The Picture Communication Symbols © 1981-2007 by Mayer-Johnson LLC.  
All rights reserved worldwide. Used with permission.

# Song Choice Cards

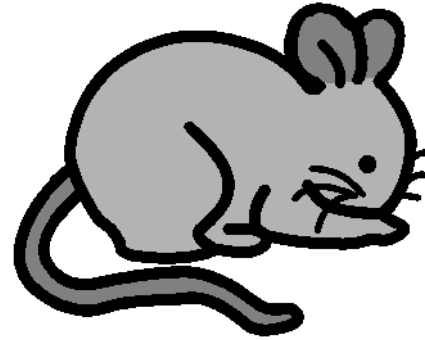
B.I.N.G.O.



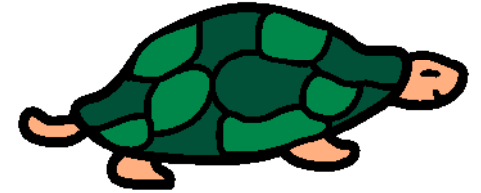
The Alphabet song



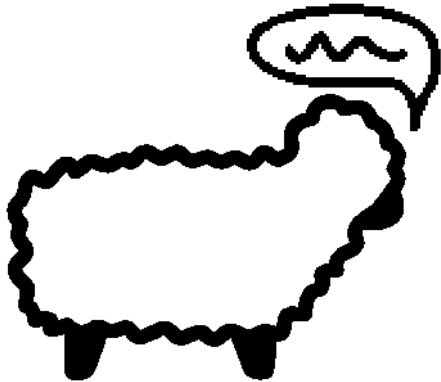
Three Blind Mice



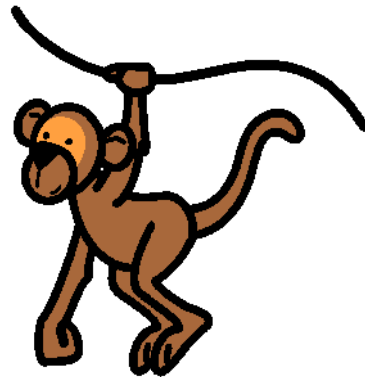
The Turtle Song



Baa Baa Black Sheep



Five Cheeky Monkeys



Instructions: These are song choice cards  
and are designed to be cut into individual cards.



© Scope (Vic) Ltd 2008. Nursery Rhymes to Sing, See and Sign.  
Developed by The Communication Resource Centre - A Service of Scope  
[www.scopevic.org.au](http://www.scopevic.org.au) - see disclaimer  
Supported by The Jack Brockhoff Foundation and hey dee ho music.  
The Picture Communication Symbols © 1981-2007 by Mayer-Johnson LLC.  
All rights reserved worldwide. Used with permission.