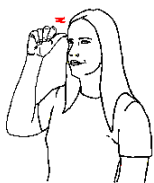


The Turtle Song – Key Signs with Song Lyrics



I know

a



little



turtle



His name



is tiny Tim (fingerspell 'T')



I put



him in the bath tub



To see

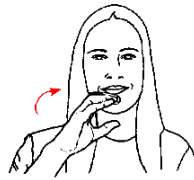


if he could swim



© Scope (Vic) Ltd 2008. Nursery Rhymes to Sing, See and Sign.
Developed by The Communication Resource Centre - A Service of Scope
www.scopevic.org.au - see disclaimer

Supported by The Jack Brockhoff Foundation, Makaton Victoria and hey dee ho music.
Sign illustrations developed by Aileen Ryan 'Hands Can Talk' © 2008 www.handscantalk.com.au



He drank



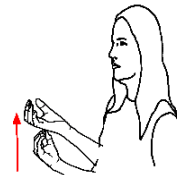
up all the water



He ate



up all the soap



Now he's got bubbles

* Use natural gesture

Deep down in his throat

* Use natural gesture

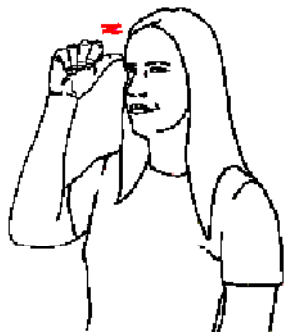
Bwww bwww etc

* Refer to Key Signs Sheet for recommended natural gesture



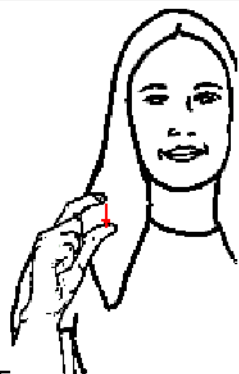
© Scope (Vic) Ltd 2008. Nursery Rhymes to Sing, See and Sign.
Developed by The Communication Resource Centre - A Service of Scope
www.scopevic.org.au - see disclaimer
Supported by The Jack Brockhoff Foundation, Makaton Victoria and hey dee ho music.
Sign illustrations developed by Aileen Ryan 'Hands Can Talk' © 2008 www.handscantalk.com.au

The Turtle Song - Key Signs



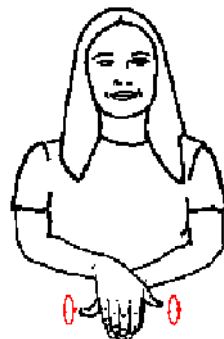
KNOW -

Tap tip of dominant thumb, fingers closed, on side of forehead, twice.



LITTLE -

Extend dominant index finger and thumb, palm in and hold at chest height. Move finger towards thumb.



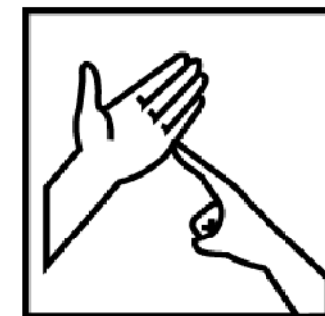
TURTLE -

Open both hands, palms down. Place dominant hand on top of non-dominant hand, thumbs extended. Simultaneously rotate both thumbs.



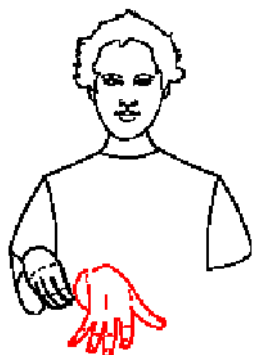
NAME -

Place extended dominant index and middle fingers on ball of thumb, place tips of formation on temple and move formation forward, turning palm away from body.



'T'-

Fingerspell 'T' for 'Tim'



PUT-

Place dominant fingertips on ball of thumb, move forward opening hand and fingers.



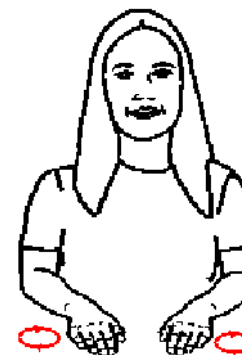
BATH - BATH TUB

Place both fist hands on chest. Move hands up and down several times.



SEE-

Move dominant index finger forward from eye.



SWIM-

Place open hands in front of body, palms down - move hands in outward circles or arcs as though swimming breast stroke. (Natural gesture)



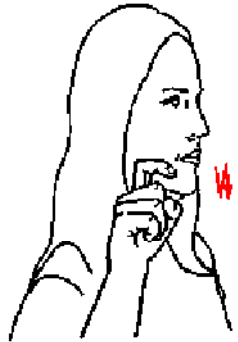
DRINK/DRANK-

Shape dominant hand as for holding a glass - tilt to mouth as for drinking. (Natural gesture)



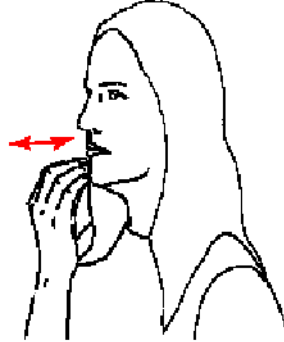
© Scope (Vic) Ltd 2008. Nursery Rhymes to Sing, See and Sign.
 Developed by The Communication Resource Centre - A Service of Scope
www.scopevic.org.au - see disclaimer
 Supported by The Jack Brockhoff Foundation, Makaton Victoria and hey dee ho music.
 Sign illustrations developed by Aileen Ryan 'Hands Can Talk' © 2008 www.handscantalk.com.au

The Turtle Song - Key Signs



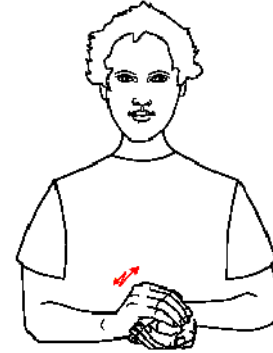
WATER-

Stroke edge of crooked dominant index finger down cheek, twice.



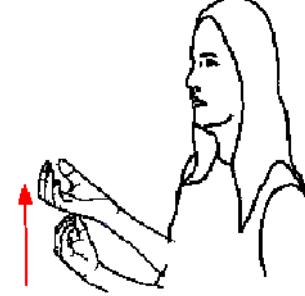
EAT/ATE-

Close dominant fingertips onto ball of thumb. Tap formation on chin, twice.



SOAP-

Hold cupped dominant hand above cupped non-dominant hand, palms facing. Rub dominant hand backwards and forwards, twice.



BUBBLES-

Hold dominant hand at mid chest height with tips of fingers resting on thumb tip. Move formation upwards quickly, opening hand and spreading fingers.

**May use both hands.*

DEEP DOWN IN HIS THROAT-




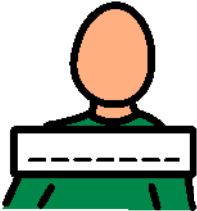

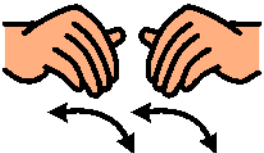



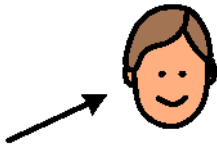
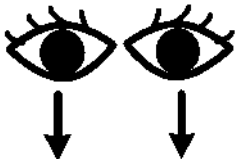


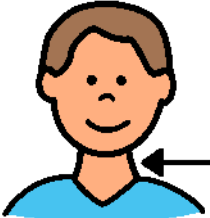
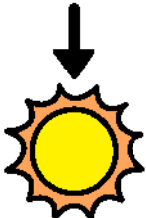

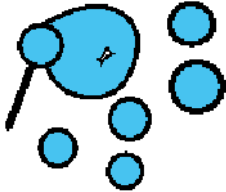


Use natural gesture
e.g. Trace line down side of neck with dominant index finger

BWWW - Use natural gesture

e.g. Place dominant index finger between lips, move finger up and down while vocalising, to make a "bwww" sound



The Turtle Song - Picture Song Board

<p>I/me</p> 	<p>little turtle</p> 	<p>drank</p> 	<p>name</p> 	<p>Tiny Tim</p>
<p>know</p> 	<p>put</p> 	<p>in</p> 	<p>bath tub</p> 	<p>deep down</p> 
<p>he/his</p> 	<p>see</p> 	<p>swim</p> 	<p>water</p> 	<p>throat</p> 
<p>now</p> 	<p>ate</p> 	<p>bubbles</p> 	<p>soap</p> 	<p>BWWW</p> 

Instructions: Point to the pictures of 'key words' at the same time as singing the song. Have fun!

