



# Supported Independent Living in Mentone

Property ID: 194

Vacancies: 2



**Bedrooms:**  
3



**Bathrooms:**  
1



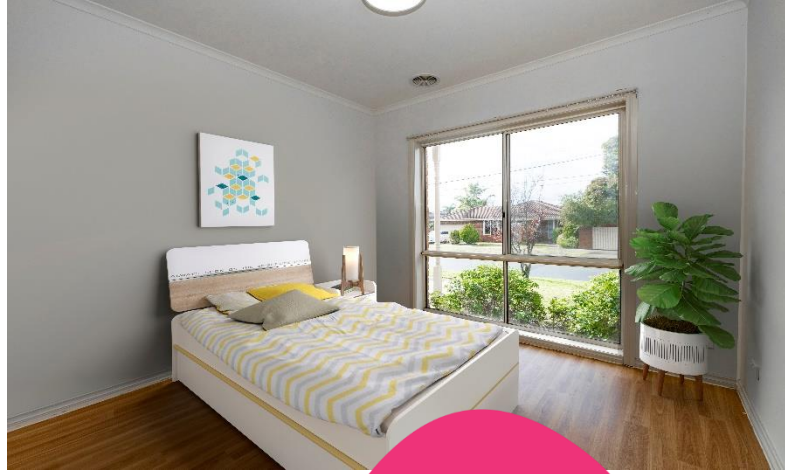
**Property Owner:**  
Department of Families, Fairness and Housing (DFFH)



**NDIS Funded SDA Design Category:**  
Basic



**Support provided:**  
7 days per week with a sleepover support model



*Your  
new home*

## Three-bedroom unit close to public transport, shops and Mentone beach.

### Features

- This unit is one of three on the block.
- Open plan kitchen and dining area with separate living room, offering space for quiet relaxation or socialising with friends.
- The house has gas ducted heating to all rooms and the lounge has reverse cycle cooling.
- The property is ideal for applicants that are mobile and require little support with their daily living skills.
- This property is owned by DFFH and staff support is provided by Scope.

### Current residents

- The current resident is in her early thirties and is a fantastic cook who enjoys having friends over.
- She has a keen interest in education and has completed several certificates.
- She is completely independent in the community and has enjoyed working part-time.

### Bedroom features

- Built in robes.
- Heating and cooling.

### Local area

- Close to Thrift Park Shopping Centre and Mentone train station.
- Close to a local reserve, Mentone Beach and Southland Shopping Centre.

### Interested in applying?

#### Before applying, make sure:

- The applicant is aged 18 years or over.
- The applicant has an appropriate level of NDIS funding.
- The applicant has the financial means to pay rent and utilities and is prepared to sign (or a representative to sign) a residential agreement.
- Specialist Disability Accommodation (SDA) category for this house is Basic.

### Find out how this can be your new home

To apply or to arrange an inspection, contact DFFH on:

[southvct@dffh.vic.gov.au](mailto:southvct@dffh.vic.gov.au)

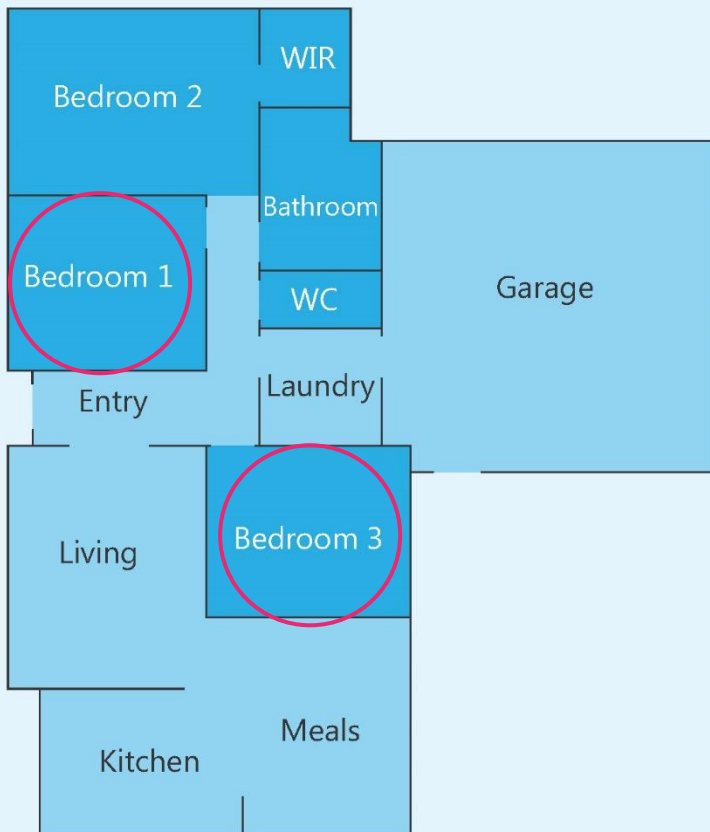
[www.dffh.vic.gov.au](http://www.dffh.vic.gov.au)

For SIL enquiries or for more details contact Scope on:

1300 472 673

[contact@scopeaust.org.au](mailto:contact@scopeaust.org.au)

Please note: The bedroom photo has staged with virtual furniture.



**Making an enquiry**

1300 472 673

[VacancyEnquiries@scopeaust.org.au](mailto:VacancyEnquiries@scopeaust.org.au)