



# Supported Independent Living in Narre Warren

Property ID: 560

Vacancies: 1



**Bedrooms:**  
5



**Bathrooms:**  
2



**Property Owner:**  
Department of Families  
Fairness & Housing  
(DFFH)



**NDIS Funded  
SDA Design Category:**  
Fully Accessible



**Support provided:**  
7 days per week  
Active Night





*Your  
new home*

## Keep fit with an awesome in-house gym and a large backyard garden.

### Features

- Purpose built property with two living areas, two accessible bathrooms/showers, and an open plan dining and kitchen area.
- Fully wheelchair accessible.
- Spacious rear yard with garden.
- In-house gym.
- Lovely courtyard and undercover sitting area.
- Staff are trained in behaviour support, as well as epilepsy and diabetes management.

### Current residents

- The current residents are all male and are aged between 55-70 years.
- They enjoy gym, fitness, gardening, cooking, movies and outings.
- All residents attend day programs throughout the week.

### Bedroom features

- Built-in robes.
- Air conditioning and heating.

### Local area

- Walking distance to local nature reserves, parks, playgrounds and walking trails.
- Easy access to a bus stop.
- 4-minute drive to Narre Warren train station.
- 10-minute drive to grocery shops, chemists, health centres, shopping centre, and eateries.

### Interested in applying?

#### Before applying, make sure:

#### Before applying, make sure:

- The applicant is aged 18 years or over.
- The applicant has approved SDA eligibility and NDIA funding at the appropriate level.
- The applicant has the financial means to pay rent and utilities and is prepared to sign (or a representative to sign) a residential agreement.
- Specialist Disability Accommodation (SDA) category for this house is Fully Accessible.

#### Find out how this can be your new home

To apply or to arrange an inspection, contact DFFH on:

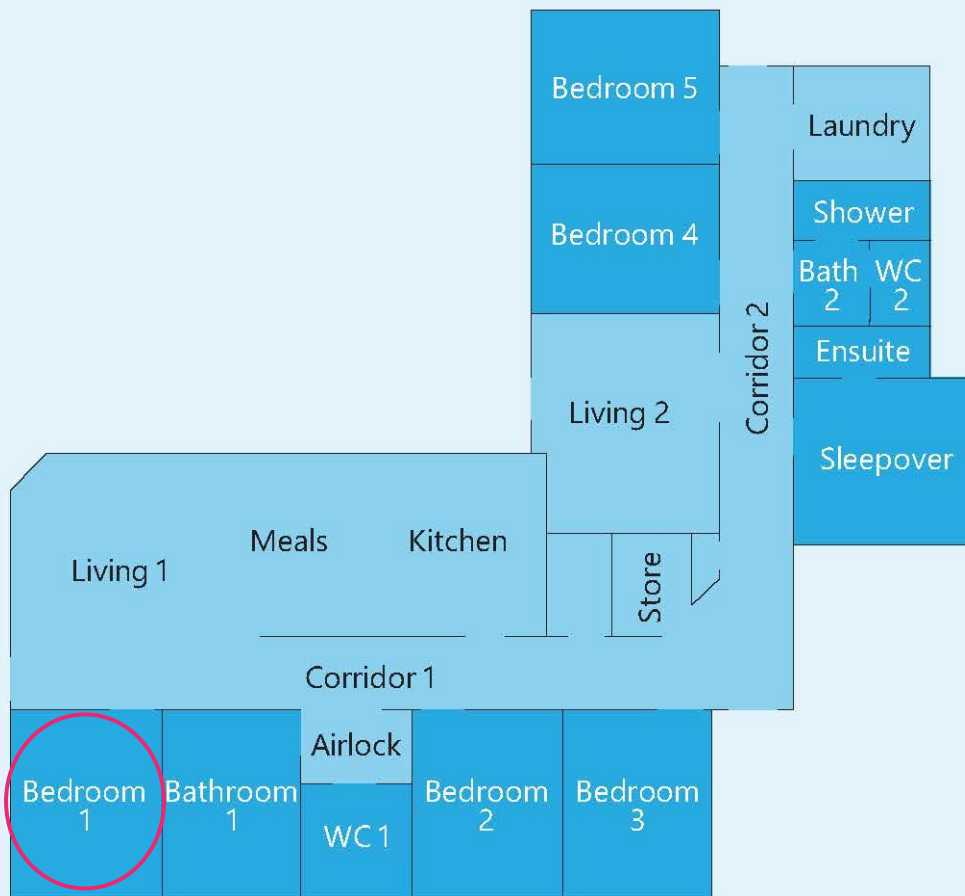
[southvct@dffh.vic.gov.au](mailto:southvct@dffh.vic.gov.au)

[www.dffh.vic.gov.au](http://www.dffh.vic.gov.au)

For SIL enquiries or for more details contact Scope on:

1300 472 673

[VacancyEnquiries@scopeaust.org.au](mailto:VacancyEnquiries@scopeaust.org.au)



**Making an enquiry**

1300 472 673

[VacancyEnquiries@scopeaust.org.au](mailto:VacancyEnquiries@scopeaust.org.au)