

Supported Independent Living at Scope

*Your home.
Your support.
Your choice.*



Let us help you find your new home

Supported Independent Living at Scope is your opportunity to live independently and make decisions about your day-to-day activities.

Our Scope homes provide you with a friendly and caring environment with some of the best quality supports available within the disability sector.

Scope supports you, or the person you care for, to make choices and decisions that turn our house into your home.

Highly trained and experienced staff provide support tailored to your needs, so you can lead a full and enjoyable life.

We strive to create with you a place you can call home and live independently, where your choices are respected.

At Scope we see the person

Our staff at Scope are dedicated to working in partnership with every person we support:

- Building excellent relationships makes a big difference to the way Scope delivers support.
- Our staff have extensive experience supporting high and complex needs.

- Staff undergo ongoing professional development, refresher courses and accredited training to ensure they remain at the top of their profession.
- Our research capability ensures we keep up to date and continue to improve the way we deliver supports to people with disability.
- We uphold the highest standards of quality and safeguards and meet sector quality certification and legislative requirements.
- We prioritise a safe environment for customers and staff, minimizing staff changes and operating to a stringent Covid safe plan.
- We listen to the needs of our customers and work in partnership to create a comfortable and welcoming home.



**Feel in control
of your living
arrangements**

What is Supported Independent Living?

Supported Independent Living [SIL] are the supports you need for your tasks around the home.

It's for the things you do every day, like:

- personal care, like showering and dressing
- cooking and eating
- cleaning
- shopping

SIL support focuses on developing your skills to help you live as independently as possible and there are a number of ways you can receive SIL supports.

SIL doesn't cover rent, groceries, transport, or utility costs like gas and electricity.

What is Specialist Disability Accommodation?

Specialist Disability Accommodation [SDA] is the place you live in, not the supports you receive in it. It is accommodation specially designed or modified to be more accessible for you.

SDA funding is given to the person and usually involves a shared home with a small number of other people. You might also be able to live in SDA by yourself if that option best meets your needs and circumstances. SDA funding is for the cost of the home or building you live in. You will usually still need to pay rent or other personal costs to live in SDA.

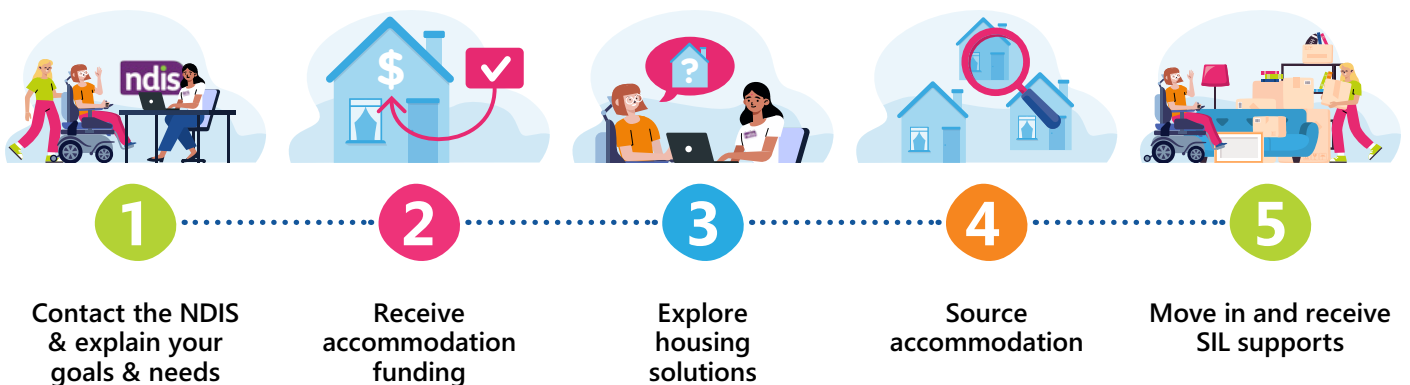
Eligibility

To access SIL services, you must have a current NDIS plan with allocated funding for SIL included in your plan.

Get the plan that's right for you - Scope NDIS Planning Tool

Planning and knowing your goals is the key to getting the right funding for the services you want. Scope's planning tool is an easy to use, step by step guide with key questions and helpful hints.

The process



Scope are here to help

Moving into your own home is a big decision, but it shouldn't be a stressful and overwhelming process. We have a dedicated Vacancy Coordination team ready to help you find your new home.

Scope's Vacancy Coordination Team are available to help you navigate the complex funding considerations, housing options and what to consider when finding a new home. They are up to date with the latest information about SIL and can talk through the process to help you decide if you are ready.

Our team will take time to find out your requirements to make sure we match you to the home that will best meet your needs. Whether you contact us about Scope's current vacancies or about your future plans, we are here to listen and help.

When you talk to us it will help if you know the following:

- the date you would like to move by
- the stage you are in the assessment phase of the NDIS planning cycle
- the area you would like to live in
- the SDA design category you qualify for: [High Physical Support, Fully Accessible, Improved Livability, Robust].

Contact the Vacancy Coordination Team today

1300 472 673

contact@scopeaust.org.au

scopeaust.org.au