



# Supported Independent Living in Croydon

Property ID: 166

Vacancies: 1



**Bedrooms:**  
5



**Bathrooms:**  
2



**Property Owner:**  
Department of  
Families, Fairness  
and Housing (DFFH)



**NDIS Funded  
SDA Design Category:**  
Improved Liveability



**Support provided:**  
Seven days per week  
with sleep over  
support model



## Lovely, spacious home with multiple living areas to relax in.

### Features

- Spacious open plan dining and living area.
- Lovely undercover outdoor seating area and backyard garden.
- Multiple living areas providing plenty of space to relax and have friends and family over.
- Wheelchair accessible.
- Pets are allowed.
- Property is owned by the Department of Families, Fairness & Housing (DFFH) and staff support is provided by Scope.

### Current residents

- Three female residents with ages between 45-55 years old.
- They love cooking, going out for coffee and meals, musicals, jewellery, having a chat and catching up with family.

### Bedroom features

- Built-in robes.
- Heating and cooling.

### Local area

- Close to several parks such as the Dorset Recreation Reserve
- Only five minutes away from Churinga Shopping Centre and Croydon Station.
- Maroondah hospital is nearby.

*Your  
new home*

### Interested in applying?

#### Before applying, make sure:

- The applicant is aged 18 years or over.
- The applicant has approved Specialist Disability Accommodation (SDA) eligibility and NDIS funding at the appropriate level.
- The applicant has the financial means to pay rent and utilities and is prepared to sign (or a representative to sign) a residential agreement.
- The SDA building type is Group Home and the SDA design category is Improved Liveability.

### Find out how this can be your new home

To apply or to arrange an inspection, contact DFFH on:

[eastvct@dffh.vic.gov.au](mailto:eastvct@dffh.vic.gov.au)

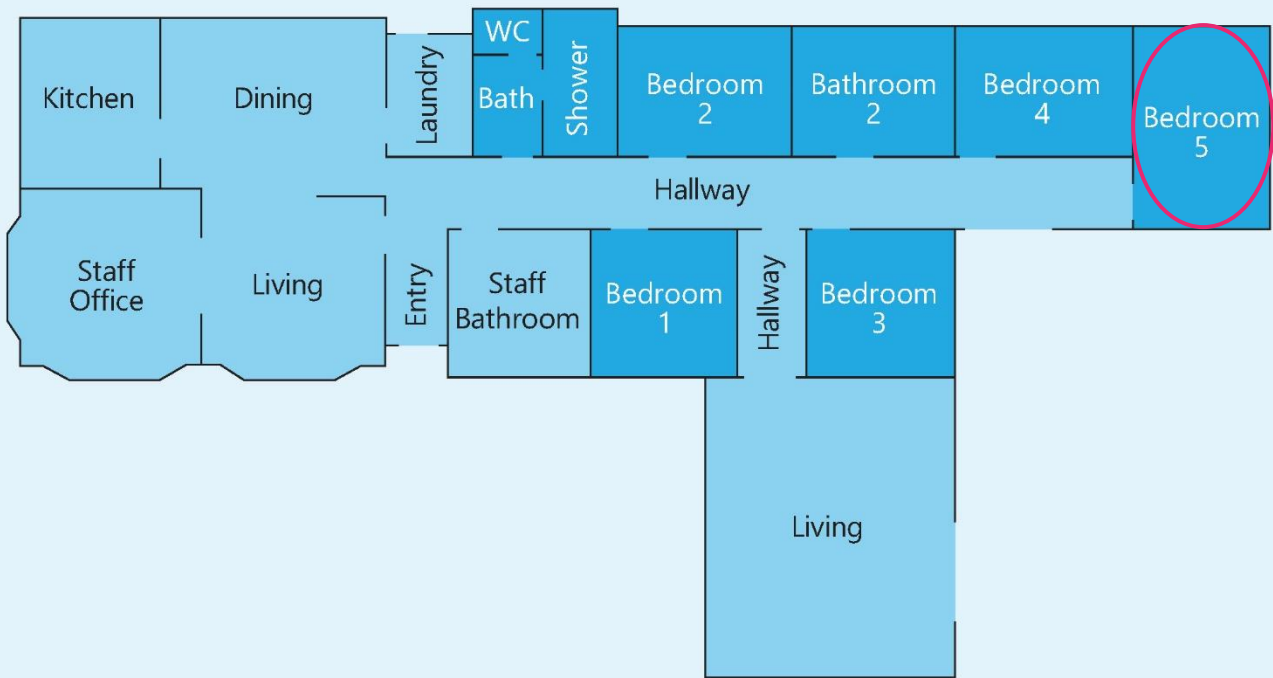
[www.dffh.vic.gov.au](http://www.dffh.vic.gov.au)

For SIL enquiries or for more details contact Scope on:

1300 472 673

[contact@scopeaust.org.au](mailto:contact@scopeaust.org.au)





## **Making an enquiry**

1300 472 673

[contact@scopeaust.org.au](mailto:contact@scopeaust.org.au)