



# Supported Independent Living in Mount Evelyn

Property ID: 562



**Bedrooms:**  
4



**Bathrooms:**  
2



**Property Owner:**  
Department of Families, Fairness and Housing (DFFH)



**NDIS Funded SDA Design Category:**  
Fully Accessible



**Support provided:**  
Seven days per week with sleep over support model



*Your  
new home*

## A lovely unit with two outdoor seating areas to enjoy.

### Features

- Open plan kitchen, dining and living area.
- Two outdoor seating areas perfect for relaxing.
- Two separate living rooms.
- Broadband internet access available.
- Wheelchair accessible.

### Current residents

- The current residents are all female and are aged between 50-60 years.
- Residents have varied interests such as arts and crafts, animals, coffee, relaxing in the garden, singing and dancing.

### Bedroom features

- Built in robes.
- Heating and cooling.

### Local area

- Short walk to local shops, restaurants and cafes.
- Nearest bus stop is only 150m away.
- Five-minute drive to Lilydale lake.
- Close to parks, gardens and walking tracks, including the Warburton walking trail.

### Interested in applying?

#### Before applying, make sure:

- The applicant is aged 18 years or over.
- The applicant has approved SDA eligibility and NDIA funding at the appropriate level.
- The applicant has the financial means to pay rent and utilities and is prepared to sign (or a representative to sign) a residential agreement.
- Specialist Disability Accommodation (SDA) design category for this house is Fully Accessible.

### Find out how this can be your new home

To apply, or for more details about this vacancy, contact DFFH on:

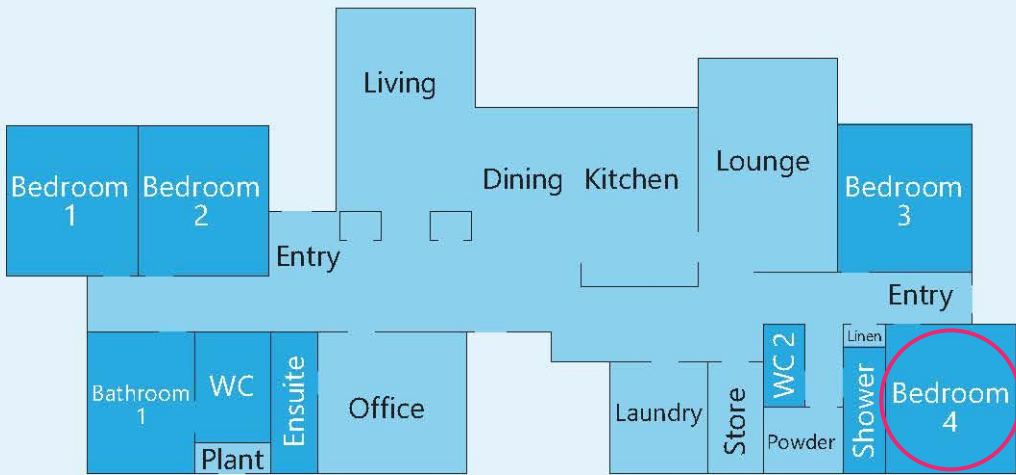
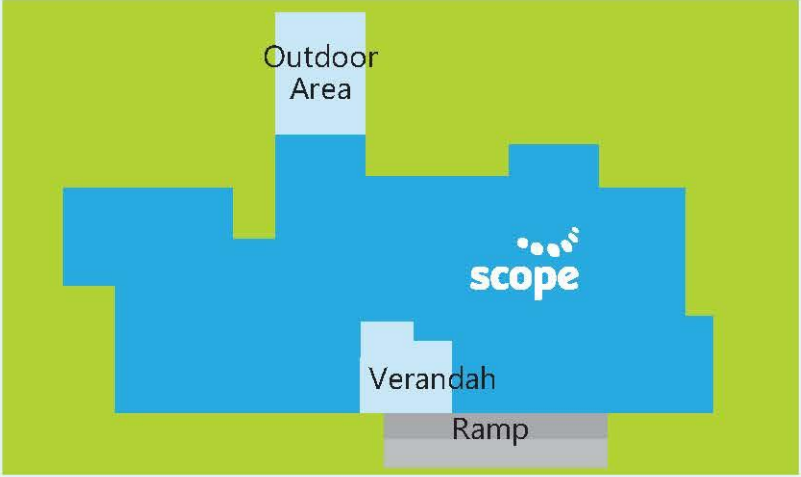
[eastvct@dffh.vic.gov.au](mailto:eastvct@dffh.vic.gov.au)

[www.dffh.vic.gov.au](http://www.dffh.vic.gov.au)

To arrange a time to visit, or for more details contact us on:

1300 472 673

[VacancyEnquiries@scopeaust.org.au](mailto:VacancyEnquiries@scopeaust.org.au)



**Making an enquiry**

1300 472 673

[VacancyEnquiries@scopeaust.org.au](mailto:VacancyEnquiries@scopeaust.org.au)